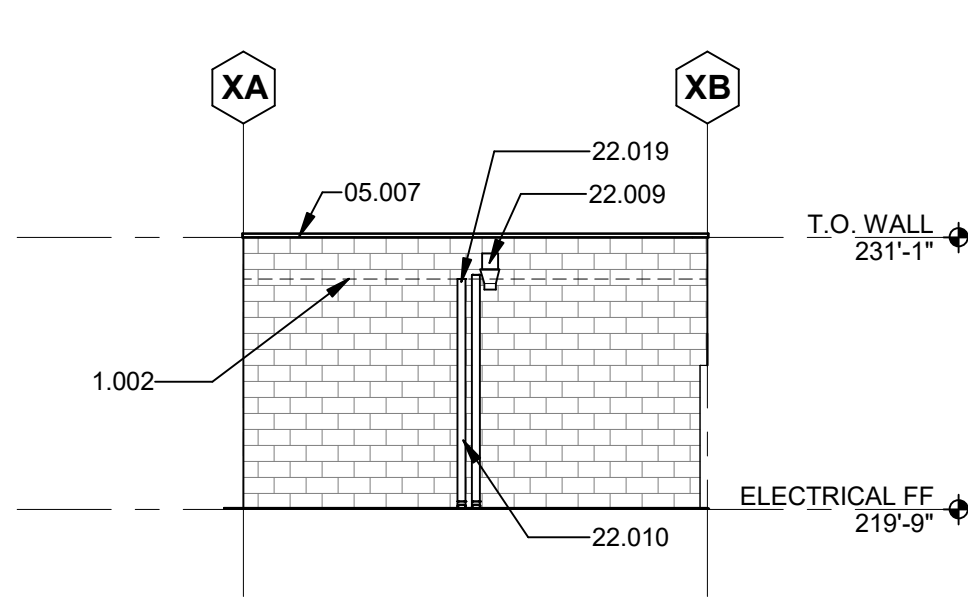
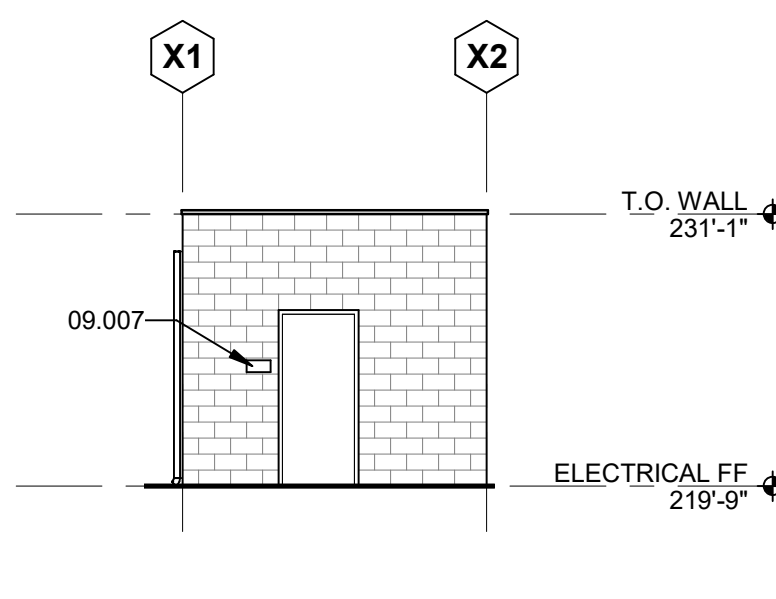


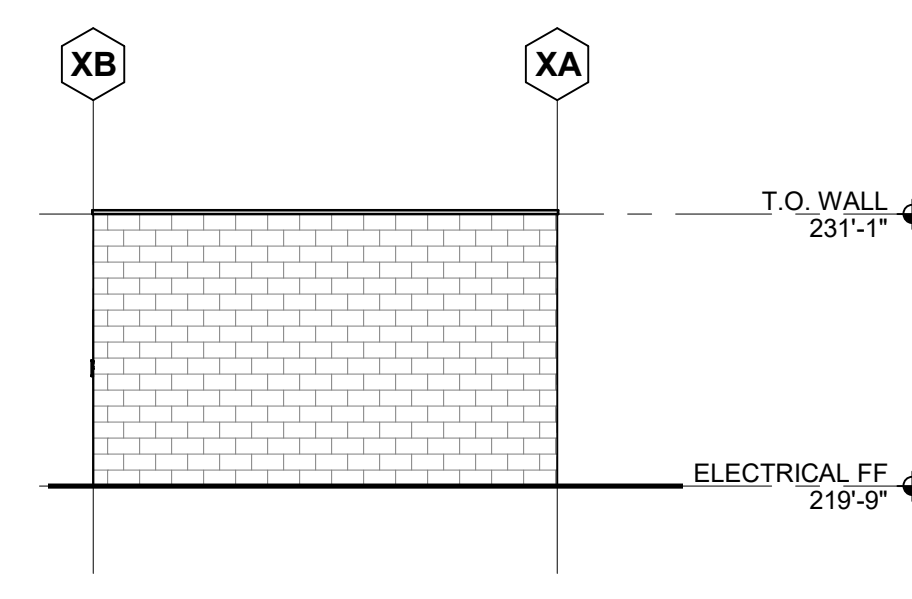
18 BUILDING X SECTION
Scale: 1/8" = 1'-0"



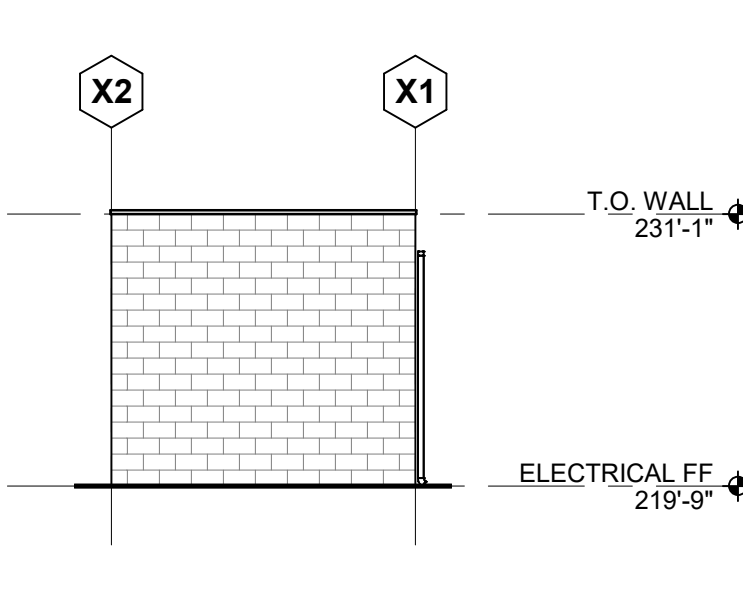
17 BUILDING X - WEST ELEVATION
Scale: 1/8" = 1'-0"



16 BUILDING X - SOUTH ELEVATION
Scale: 1/8" = 1'-0"

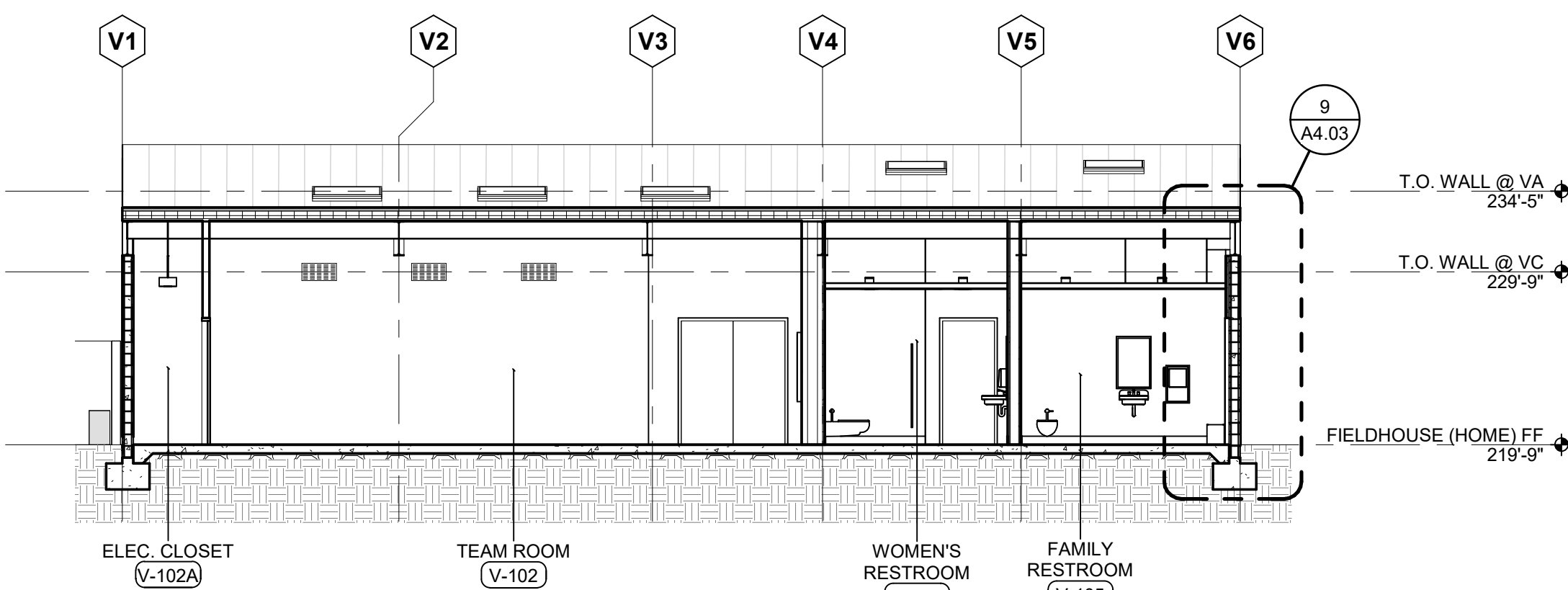


15 BUILDING X - EAST ELEVATION
Scale: 1/8" = 1'-0"

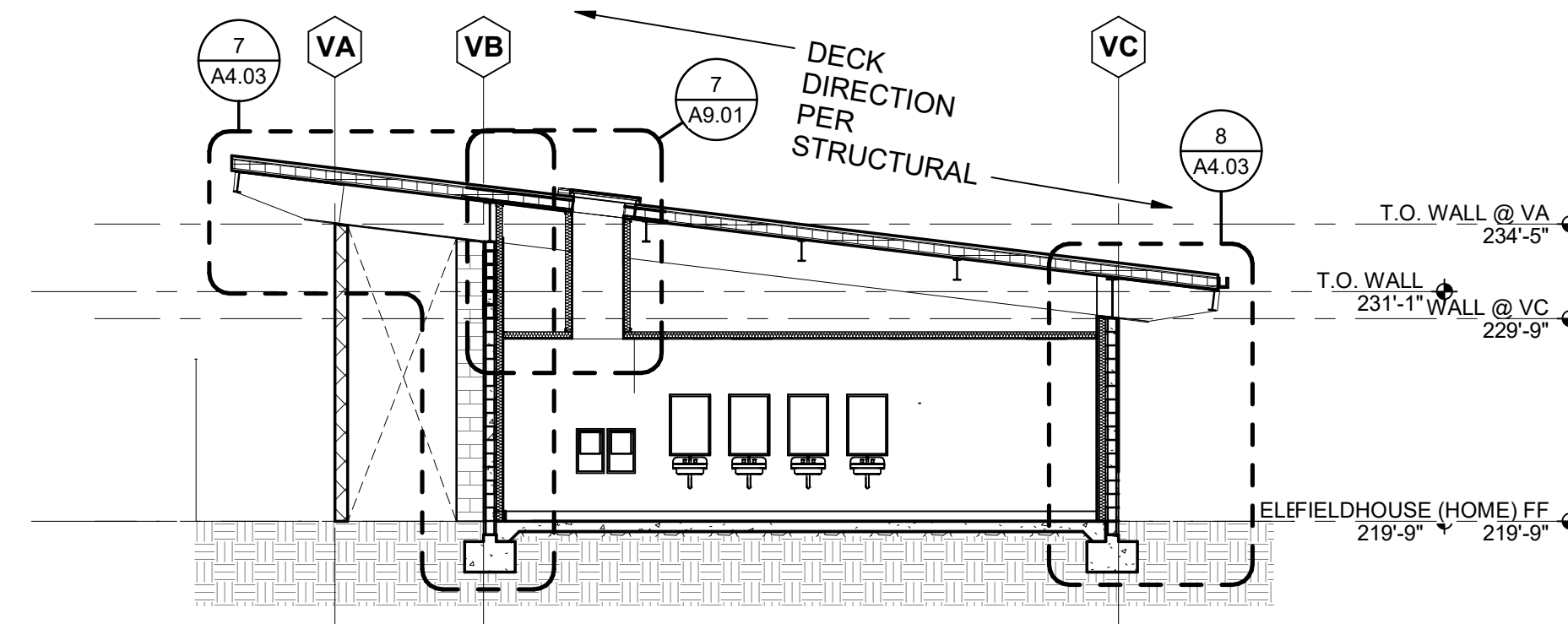


14 BUILDING X - NORTH ELEVATION
Scale: 1/8" = 1'-0"

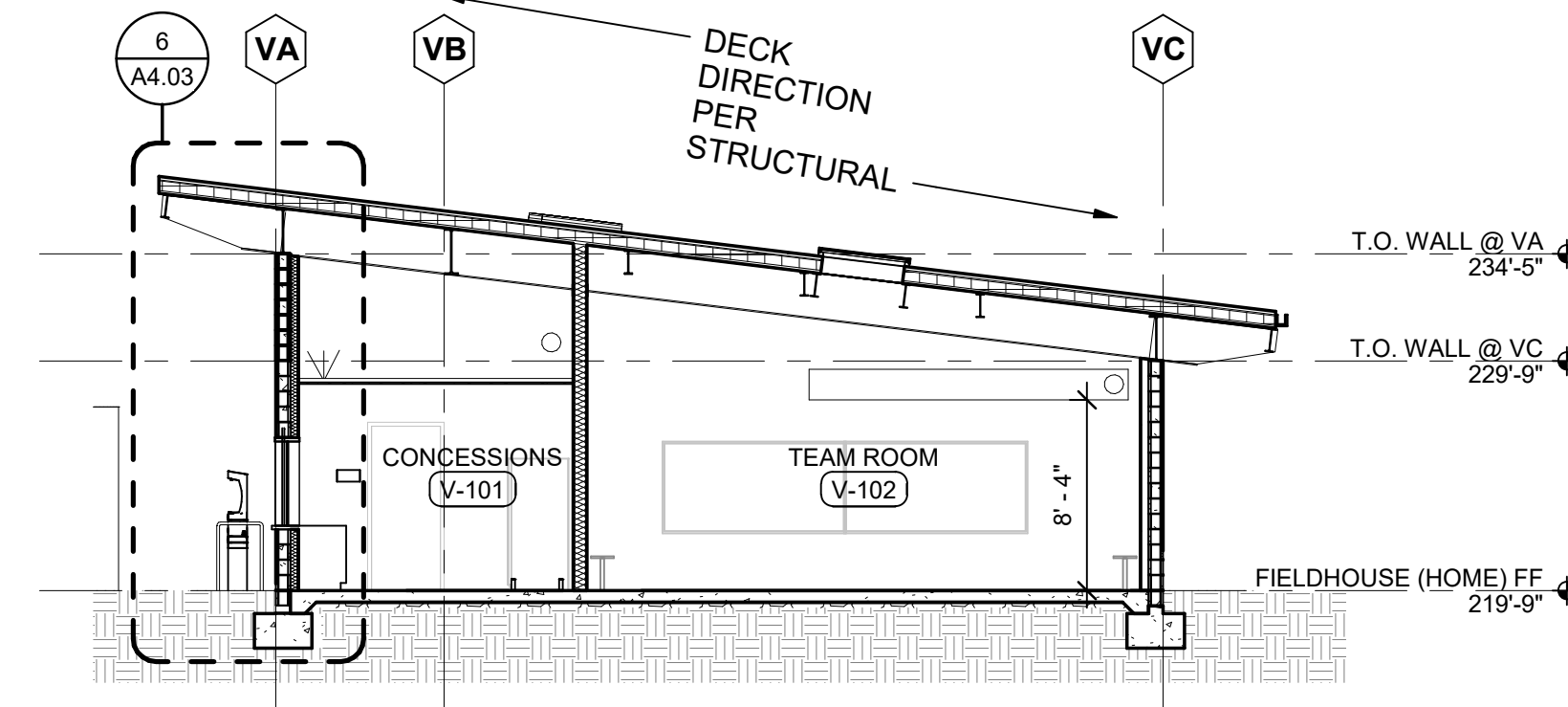
KEYNOTE LEGEND	
KEYNOTE	NOTE
1.002	LINE OF LOWEST POINT OF ROOF
04.001	CONCRETE MASONRY UNIT, SEE ELEVATION MATERIAL LEGEND
04.002	CONCRETE MASONRY UNIT, SEE ELEVATION MATERIAL LEGEND
05.005	GALV. STL. WING GUARD, SEE 1/A5.02
05.006	EXPOSED METAL DECK, PAINTED
05.007	METAL FLASHING
07.001	STANDING SEAM ROOF, TYP.
08.001	WINDOW, SEE WINDOW SCHEDULE, TYP.
08.004	TICKET WINDOW, TYP.
08.005	SKYLIGHT, SEE 8/A9.01 AND SCHEDULE ON A3.20
09.002	TILE WALL, AS SCHEDULED
09.004	PAINTED GYPSUM BOARD PER SCHEDULE
09.007	SIGNAGE, SEE 1/A5.10
09.014	PROVIDE ALS SIGNAGE, SEE 7/A5.10
09.015	SURFACE APPLIED MURAL
12.028	PIPE BOLANDS, SEE 4/A5.01
15.001	STRUCTURAL BEAMS, TYP.
22.006	7" GUTTER, TYP.
22.009	SECONDARY OVERFLOW SCUPPER, SEE DETAIL 3/A9.01
22.010	3" METAL DOWNSPOUT 18GA, SEE P7.03 FOR SIZE
22.019	PRIMARY ROOF DRAIN, SEE DETAIL 6/A9.01
23.001	LOUVER, TYP.



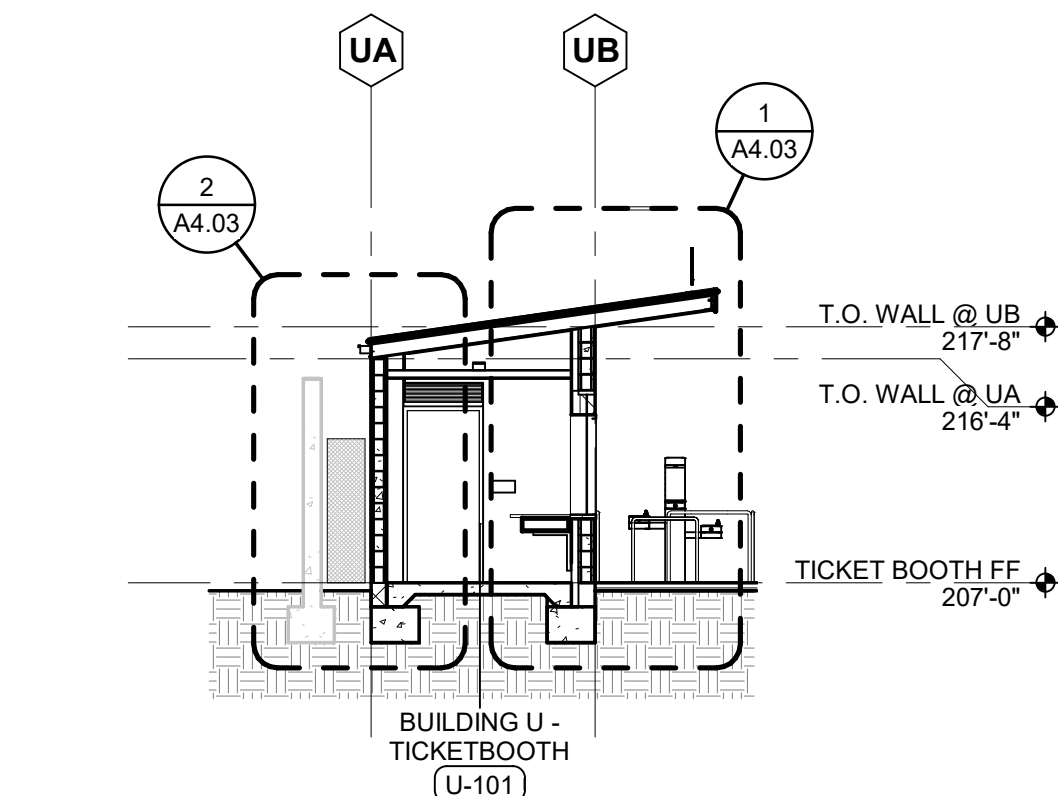
13 BUILDING V - FIELD HOUSE SECTION
Scale: 1/8" = 1'-0"



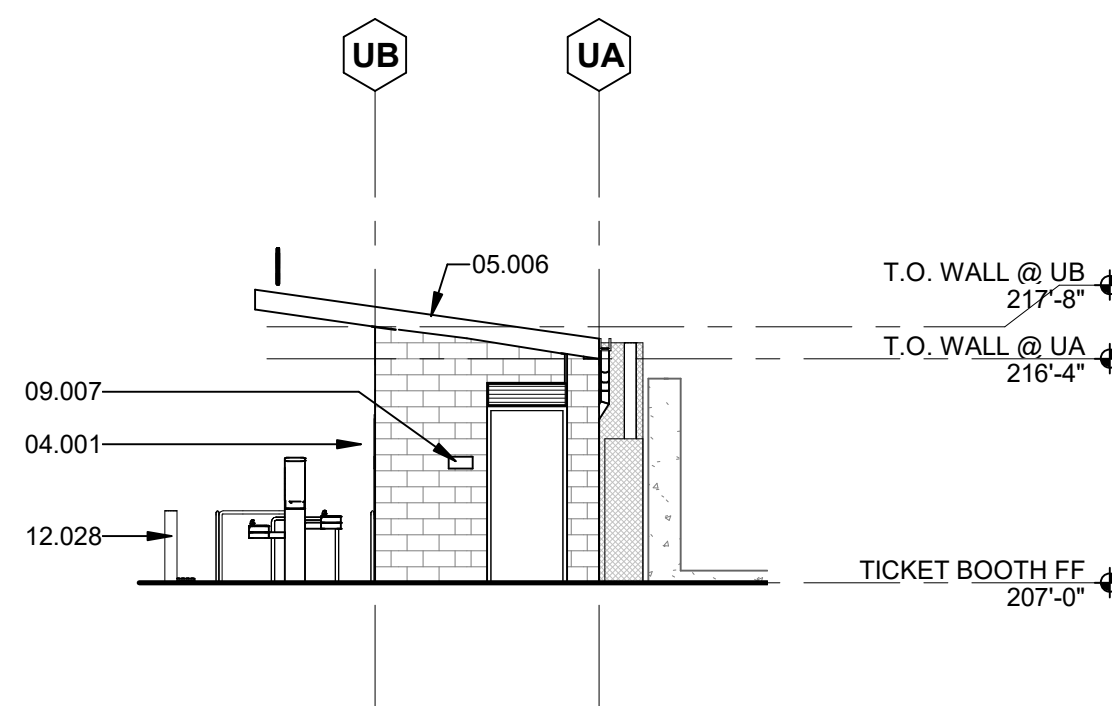
12 BUILDING V - FIELD HOUSE SECTION B
Scale: 1/8" = 1'-0"



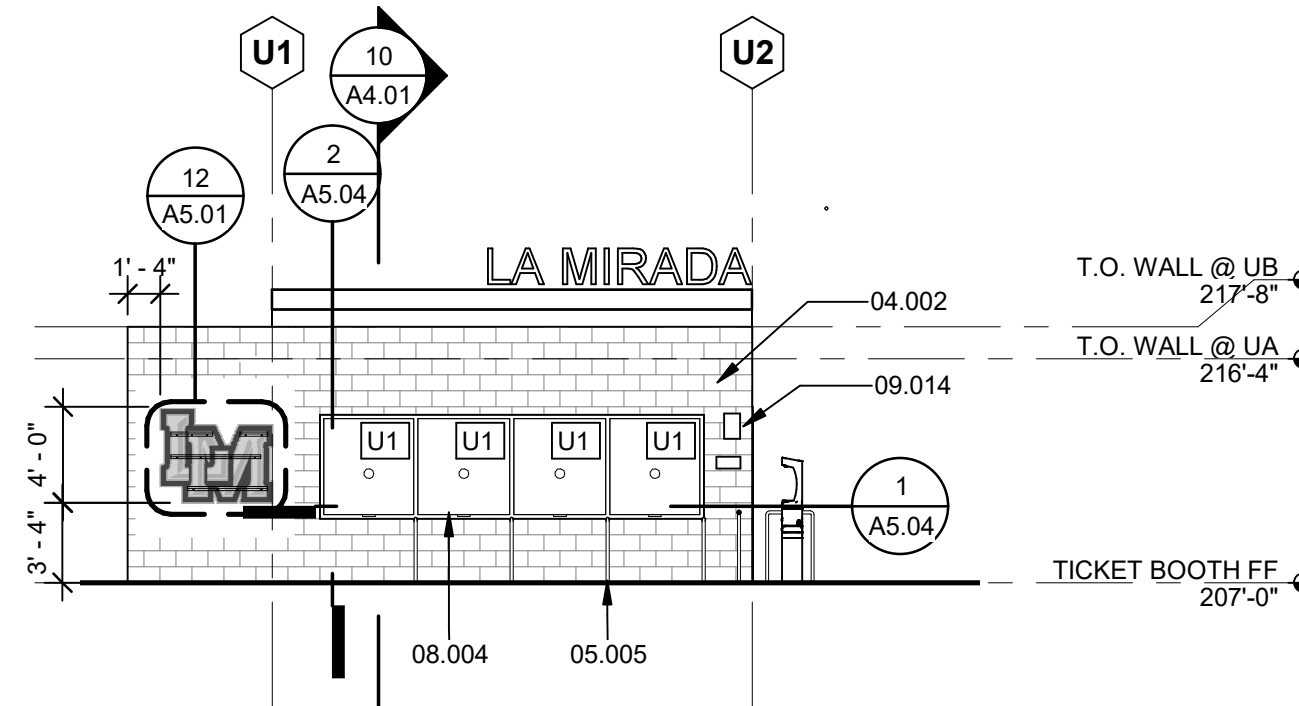
11 BUILDING V - FIELD HOUSE SECTION A
Scale: 1/8" = 1'-0"



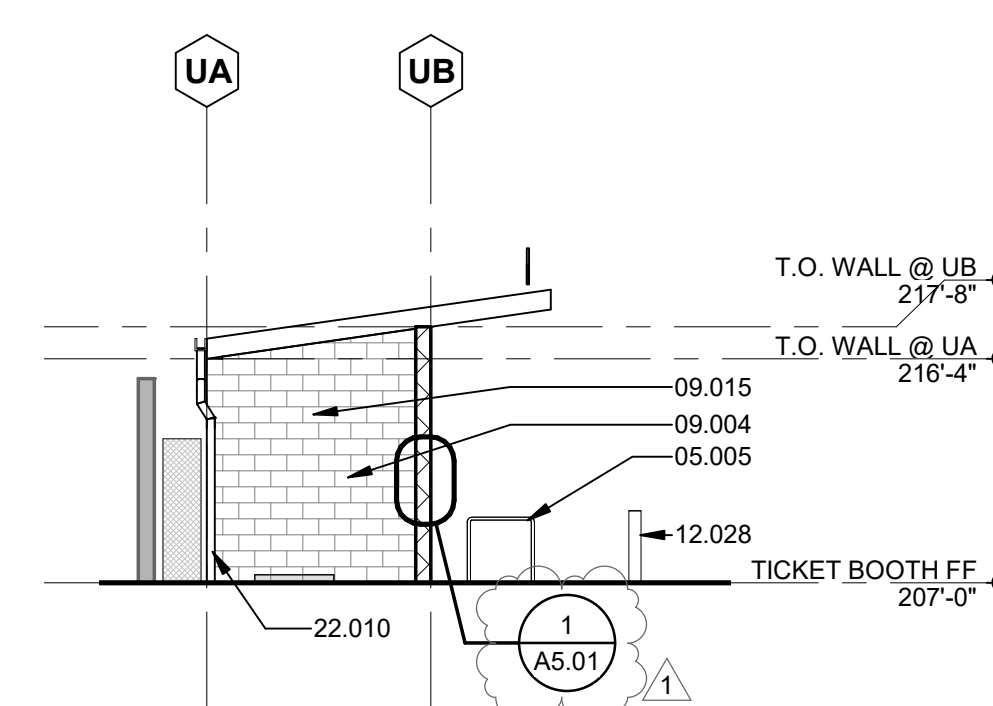
10 BUILDING U - SECTION
Scale: 1/8" = 1'-0"



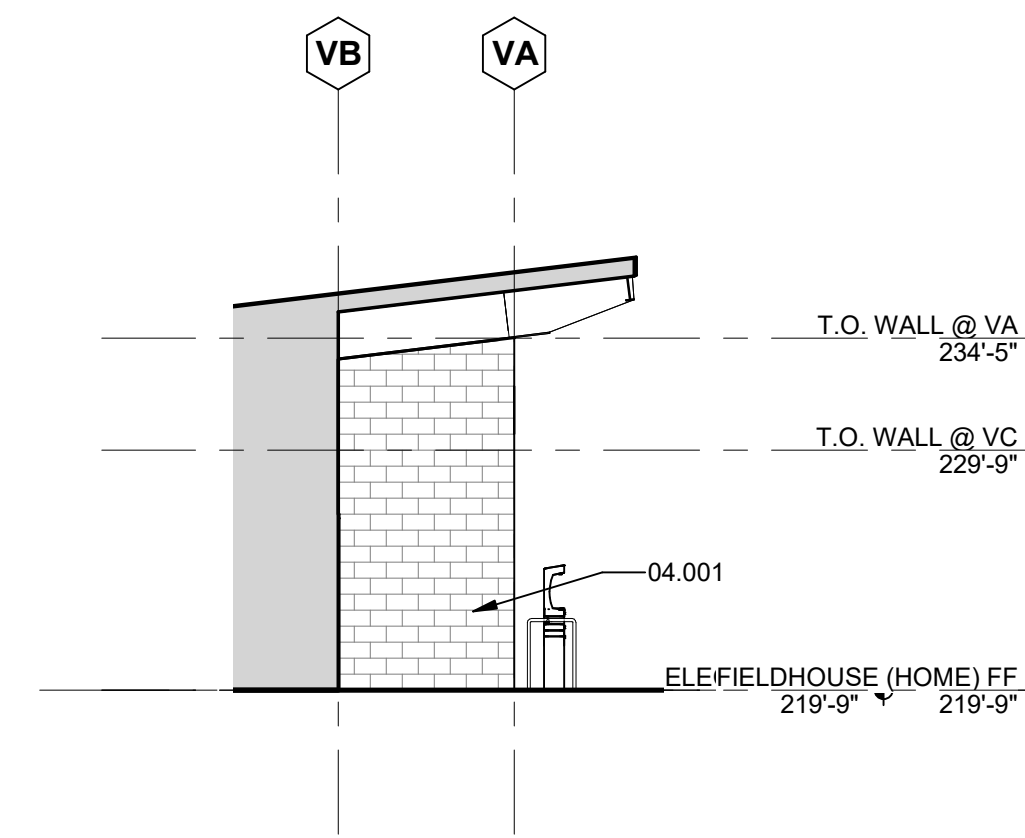
9 BUILDING U - SOUTH ELEVATION
Scale: 1/8" = 1'-0"



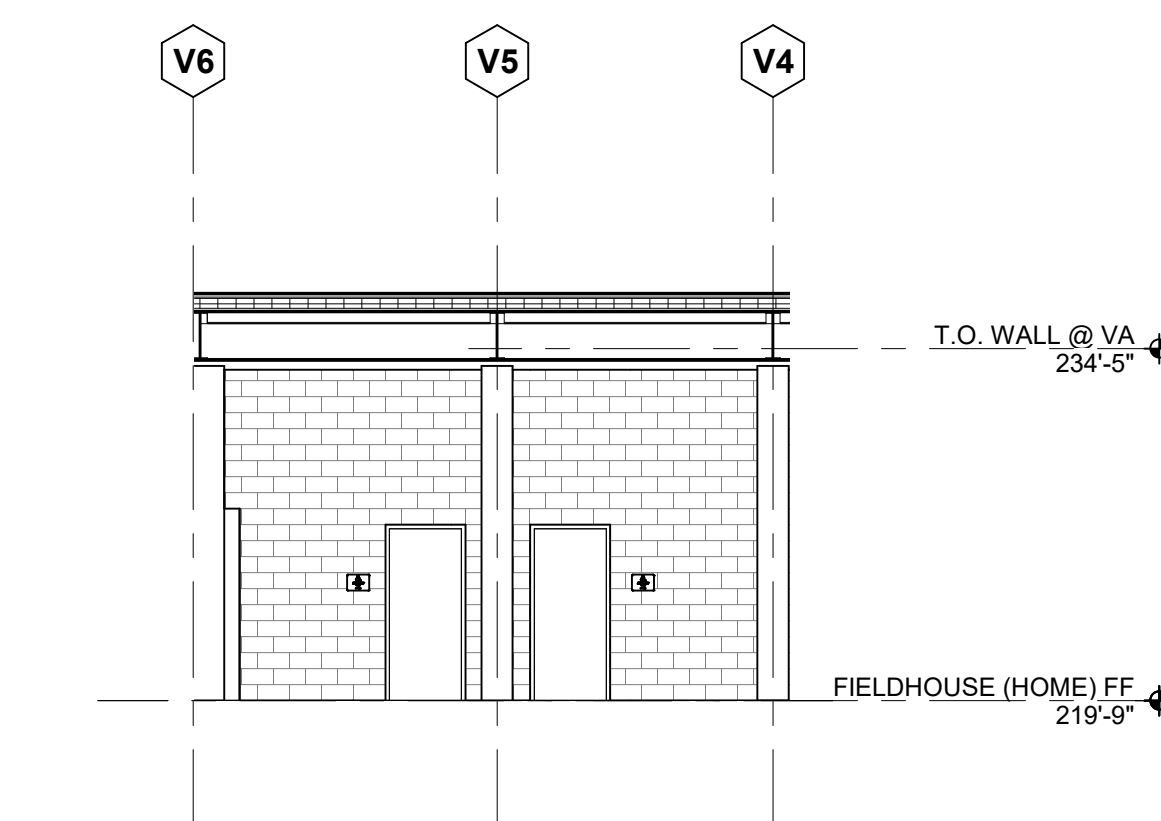
8 BUILDING U - WEST ELEVATION
Scale: 1/8" = 1'-0"



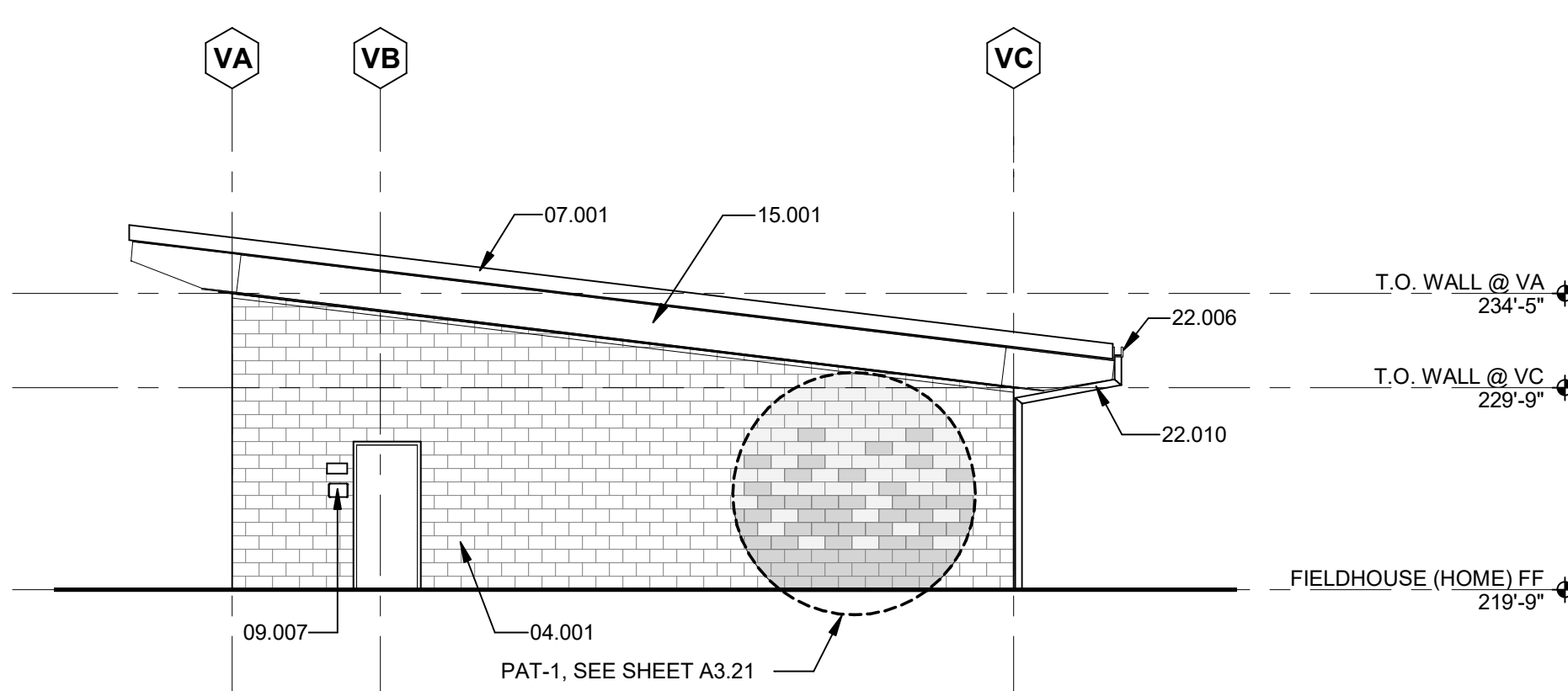
7 BUILDING U - NORTH ELEVATION
Scale: 1/8" = 1'-0"



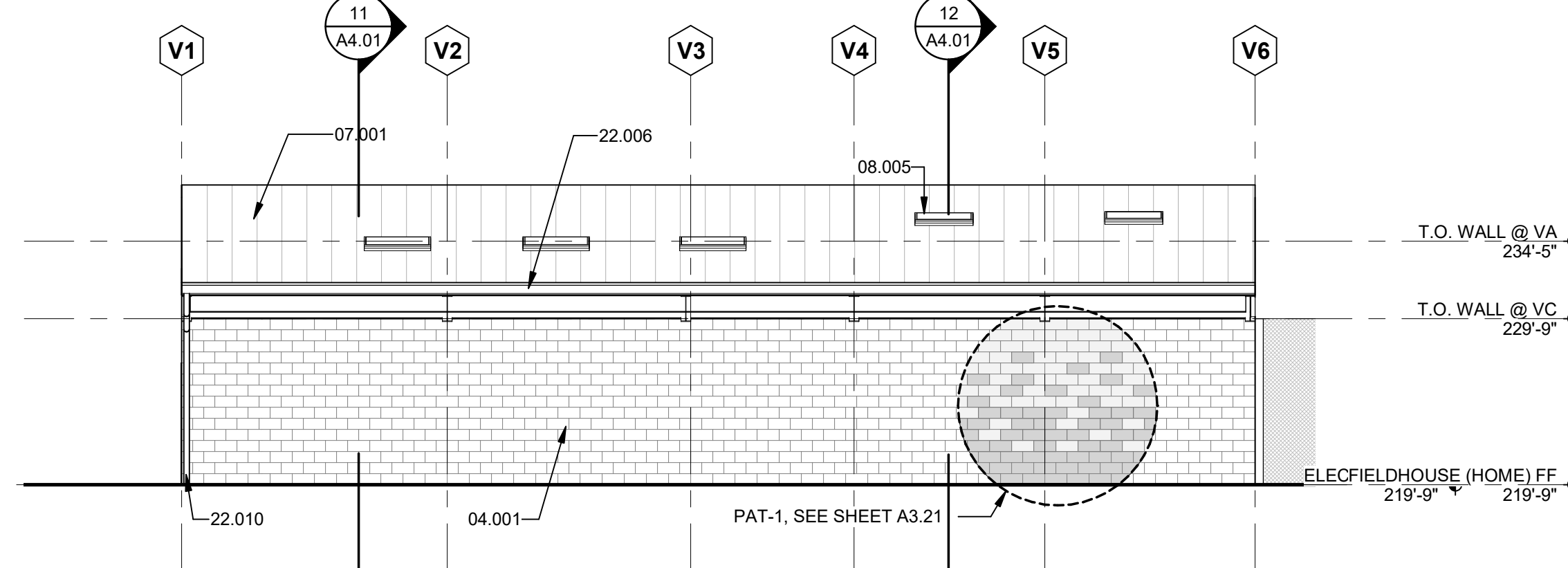
6 HOME FIELD HOUSE - EAST CONCESSION ELEVATION
Scale: 1/8" = 1'-0"



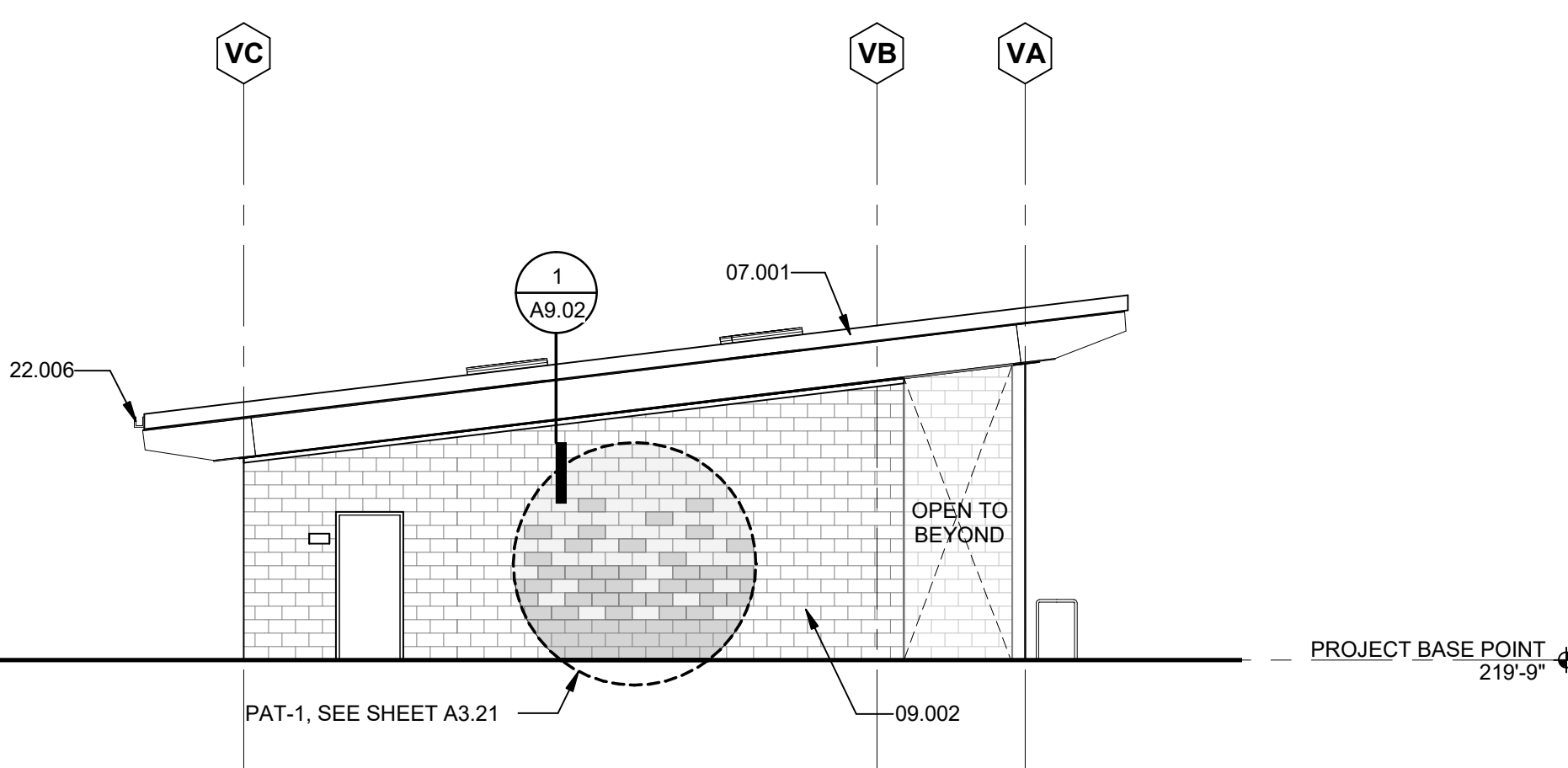
5 BUILDING V - HOME FIELD HOUSE - PARTIAL ELEVATION
Scale: 1/8" = 1'-0"



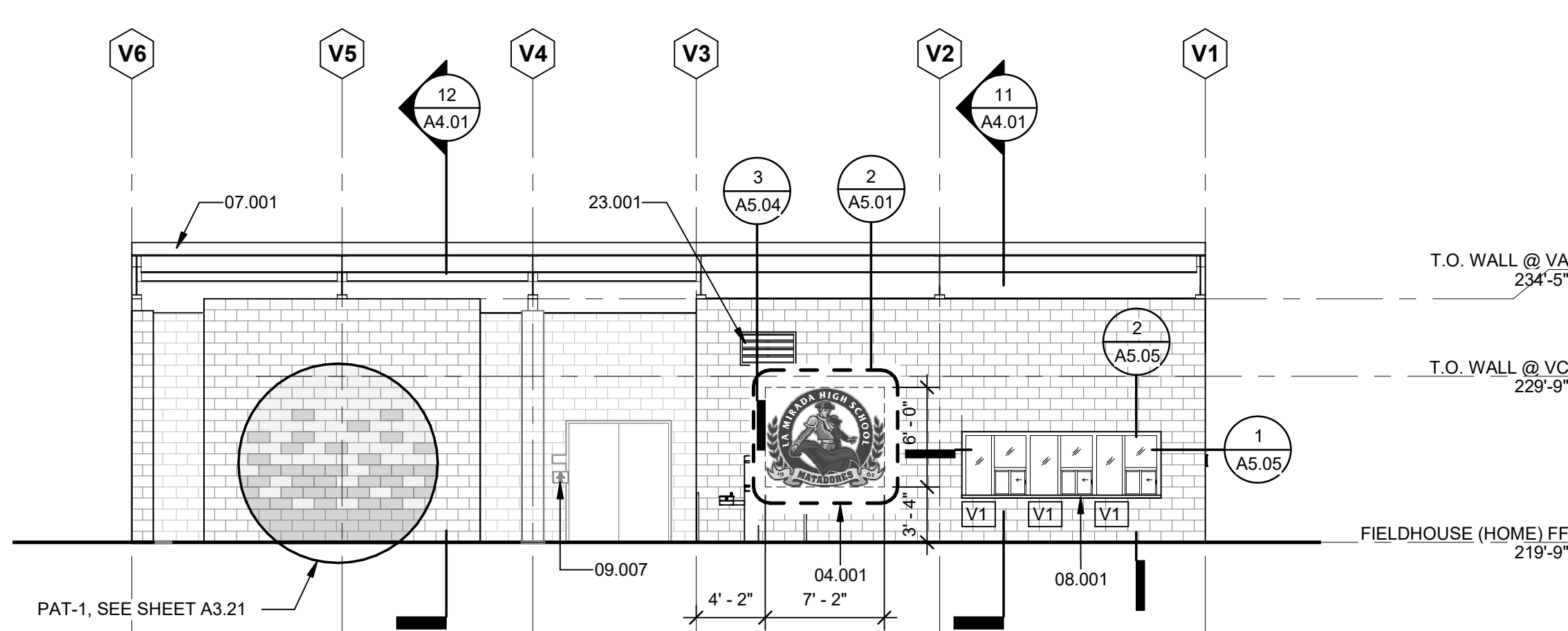
4 BUILDING V - HOME FIELD HOUSE - WEST ELEVATION
Scale: 1/8" = 1'-0"



3 BUILDING V - HOME FIELD HOUSE - SOUTH FIELD HOUSE
Scale: 1/8" = 1'-0"



2 BUILDING V - HOME FIELD HOUSE - EAST ELEVATION
Scale: 1/8" = 1'-0"



1 BUILDING V - HOME FIELD HOUSE - NORTH ELEVATION
Scale: 1/8" = 1'-0"

ELEVATION MATERIALS LEGEND	
	CMU-1 = SILVER PRECISION
	CMU-2 = GREYSTONE SPLITFACE
NOTE: THIS LEGEND DOES NOT INCLUDE ALL MATERIALS. SEE NOTES & REFERENCED DETAILS FOR ADDITIONAL INFORMATION. CMU PLACEMENT SHOULD BE PLUM AT INTERIOR FACE.	

GLAZING LEGEND	
	CLEAR GLASS

EXTERIOR ELEVATION GENERAL NOTES	
1.	LOCATION AND SPACING OF WINDOW MULLIONS, MASONRY CONTROL JOINTS AND COURSE PATTERNS, ETC., ARE TO BE AS SHOWN ON EXTERIOR ELEVATIONS. WHERE NOT DIMENSIONED OR DETAILED, WINDOW MULLIONS AND MATERIAL JOINTS ARE TO BE EQUALLY SPACED AND/OR CENTERED) ALIGNED W/ ADJACENT ELEMENT (MASONRY COLUMN, EDGE OR CENTER LINE OF WINDOW OR DOOR OPENING, ETC) AS SHOWN.
2.	SEE SHEET A3.20 FOR ALUMINUM LOUVER TYPES AND SEE MECH FOR COORDINATION WITH DUCTWORK.
3.	REFER TO DETAILS FOR DIMENSION REFERENCE POINTS.
4.	CONTROL JOINTS EXTEND FULL HEIGHT OF MASONRY, TYP. WHERE "CJ" IS INDICATED AT INSIDE CORNERS THE JOINT SHALL PENETRATE THE MASONRY SURFACE ON WHICH THE LABEL OCCURS. SEE DETAILS FOR ADDITIONAL CJ LOCATIONS.
5.	ALL WINDOW AND LOUVER DIMENSIONS ARE FOR ROUGH OR MASONRY OPENING, UNLESS NOTED OTHERWISE. SEE PLANS FOR ADDITIONAL DIMENSION INFORMATION.
6.	100'-0" IS THE DATUM ELEVATION AND CORRESPONDS TO THE REFERENCED FLOOR SLAB ELEVATION AS NOTED ON FLOOR PLAN. SEE CIVIL FOR FURTHER INFORMATION.
7.	EXTERIOR WALL FINISHES EXTEND FULL HEIGHT TO SOFFITS (NOT SHOWN WHERE EAVES OBSCURE VIEW). SEE BUILDING SECTIONS & DETAILS.

REVISIONS	
1	ADDENDUM 1
02/01/2022	

THIS APPROVAL IS FOR ITEMS WITHIN CLOUDED AREAS ONLY. FOR OTHER INFORMATION NOT CONTAINED WITHIN CLOUDED AREAS, REFER TO ORIGINAL DSA APPROVED PLANS.
DO NOT USE THESE PLANS AS SUBSTITUTE FOR THE ORIGINAL DSA APPROVED PLANS.



NORWALK LA MIRADA UNIFIED SCHOOL DISTRICT
LA MIRADA HIGH SCHOOL NEW FOOTBALL STADIUM PROJECT
13520 ADELA DRIVE, LA MIRADA, CA 90638

DSA # 03-120551

NAC
ARCHITECTURE

NAC NO. 161-19015
DATE 02/01/2022

ADDENDUM 1

EXTERIOR ELEVATIONS & BUILDING SECTIONS

A4.01